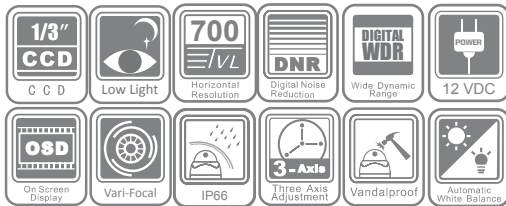


DS-2CC52A1P(N)-VP

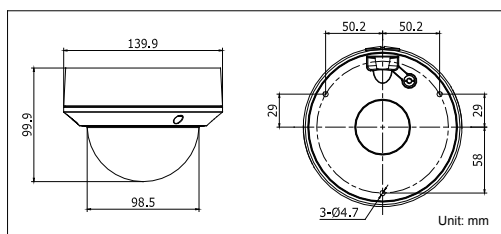
700 TVL Outdoor Vandal Proof Dome Camera



Key features

- 1/3" SONY CCD
- 700 TVL Horizontal Resolution
- Electronic Day/Night
- 2.8–12mm Vari-focal Lens
- OSD Menu, DNR, Digital WDR, Eclipse
- Vandal Proof, IP66 Rating

Dimensions



| DS-2CC52A1P(N)-VP | |
|------------------------------|--|
| Camera | |
| Image Sensor | 1/3" SONY CCD |
| Signal System | PAL/NTSC |
| Effective Pixels | PAL: 976 (H) × 582 (V) NTSC: 976 (H) × 494 (V) |
| Min. Illumination | 0.001Lux @ (F1.2,AGC ON) 0.0014Lux @ (F1.4,AGC ON) |
| Shutter Speed | PAL: 1/50 s to 1/100,000 s NTSC: 1/60 s to 1/100,000 s |
| Lens | 2.8 - 12 mm @ F1.4 Angle of view: 80° - 27.2° |
| Lens Mount | φ14 |
| Auto Iris | DC drive |
| Angle Adjustment | Pan: 0 - 355°, Tilt: 0 - 75°, Rotation: 0 - 355° |
| Day & Night | Electronic |
| Horizontal Resolution | 700 TVL |
| Synchronization | Internal synchronization |
| Video Output | 1Vp-p composite output (75 Ω/BNC) Test monitor out [1Vp-p composite output (75 Ω/BNC), device line] |
| S/N Ratio | More than 62 dB |
| Menu | |
| Camera ID | On/Off (52 letters, position adjustable) |
| D/N Mode | Auto /Day /Night |
| White Balance | ATW/PUSH/USER1/USER2/ANTI CR/MANUAL/PUSH LOCK |
| Privacy Masking | On/Off, maximum 8 zones |
| Motion Detection | On/Off |
| Back Light | BLC/HLC/Off |
| Language | English/Chinese/ Korean/ Italian/ Russian/ Portuguese/ German/ French |
| Function | ATR, HLC, DNR, Sharpness, Brightness, Contrast, Hue, Gain, Mirror, Defect Pixel Correction |
| General | |
| Working Temperature/Humidity | -10 °C - 60 °C (14 °F - 140 °F) Humidity 90% or less (non-condensing) |
| Power Supply | 12 V DC ± 10% |
| Power Consumption | Max. 2 W |
| Ingress Protection level | IP66 |
| Impact Protection | IEC60068-2-75 test, Eh, 50J; EN50102, up to IK10. |
| Dimension | Φ 139.9 × 99.9 mm (Φ 5.51" × 3.93") |
| Weight | 800 g (1.76 lbs) |

Available models

PAL: DS-2CC52A1P-VP
NTSC: DS-2CC52A1N-VP

Accessories



DS-1216ZJ
(Wall Mount)



DS-1238ZJ
(Pendant Mount)